

Alto 1

443

CAGNEY & LACEY

(Sorry Altos !!)

Handwritten musical notation for the first staff, featuring a treble clef, a key signature of one sharp (F#), and a 4/4 time signature. The staff contains a series of eighth notes with various dynamics and articulations.

Second staff of handwritten musical notation, continuing the piece with similar rhythmic patterns and dynamic markings.

Third staff of handwritten musical notation, marked with a circled 'A' and containing dynamic markings such as *ff*.

Fourth staff of handwritten musical notation, featuring a *f* dynamic marking and a 'Bring Out' instruction.

Fifth staff of handwritten musical notation, continuing the melodic line with various dynamics.

Sixth staff of handwritten musical notation, marked with a circled 'B' and containing a 'loud' marking and a *ff* dynamic.

Seventh staff of handwritten musical notation, featuring a 'Bring Out' instruction and a *fff* dynamic marking.

Eighth staff of handwritten musical notation, marked with a circled 'C' and containing a 'Bring Out' instruction and a *fff* dynamic.

Ninth staff of handwritten musical notation, continuing the piece with dynamic markings.

Tenth staff of handwritten musical notation, ending with a double bar line and a *fff* dynamic.

Eleventh staff, which is empty.

Twelfth staff, which is empty.

D.S. with repeat sign

Alto 2

CAGNEY & LACEY

(Sorry Alto)!!

ff

ff

Bring Out

(A)

f

Bring Out

fff

f

Loud

(B)

7

Bring Out

fff

Bring Out

D.S. with repeat

fff

(C)

ff

ff

Tenor 2

CAGNEY & LACEY

3 1

f

(A)

(B) Lead

f *ff*

Unies with trpts

(C)

4

ff *D.S. with repeat*

Alto 3

CAGNEY & LACEY

3 1

BRING OUT... (A) Lead f ff

LOUD (B) f fff

3 ff

f BRING OUT... D.S. with repeat fff

(C) 4 fff

Trumpet 1

CAGNEY & LACEY

Handwritten musical score for Trumpet 1, featuring ten staves of music. The score includes various annotations and dynamic markings:

- Staff 1: Includes a circled 'A' and a '3' above the staff.
- Staff 2: Includes a circled 'B' and a '3' above the staff.
- Staff 3: Includes a circled 'C' and a '4' above the staff.
- Staff 4: Includes a circled 'D' and a '5' above the staff.
- Staff 5: Includes a circled 'E' and a '4' above the staff.
- Staff 6: Includes a circled 'F' and a '5' above the staff.
- Staff 7: Includes a circled 'G' and a '4' above the staff.
- Staff 8: Includes a circled 'H' and a '5' above the staff.
- Staff 9: Includes a circled 'I' and a '4' above the staff.
- Staff 10: Includes a circled 'J' and a '5' above the staff.

Dynamic markings include *ff*, *fff*, and *f*. Performance instructions include "D.S. without repeat", "Opt 8va on 2nd & 3rd time", and "with last repeat".

Three empty musical staves at the bottom of the page.

Trumpet 2 CAGNEY & LACEY

3 1 3 4 (A)

f

ff

ff

ff

(B) 3

f

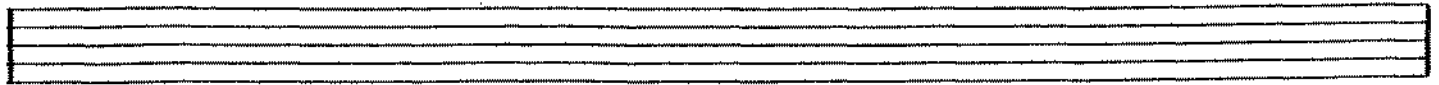
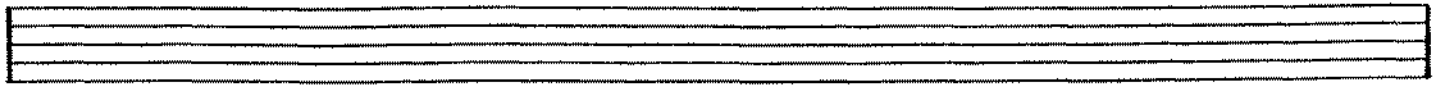
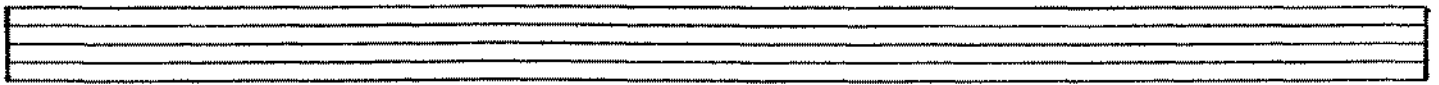
ff

D.S.

(C) 4

fff

D.S. with repeat



Trumpet 3

CAGNEY & LACEY

3 1 ~~D.S.~~ 4 (A)

(B) 3 Unis ff

D.S. with repeat

(C) 4 E> fff

Trumpet 4

CAGNEY & LACEY

3 1 ~~S.~~ 4 (A)

(B) 3 f

D.S. without repeat

(C) 4

Trom 1

CAGNEY & LACEY

3 1 :8: 4

①

②

③

D.S. with repeat

fff

Trom 2

CAGNEY & LACEY

3 1 4

(A)

(B)

(C)

Trom 3

CAGNEY & LACEY

3 1 3 :S: 4

①

②

D.S. with repeat
out

③

Trom 4

CAGNEY & LACEY

3 1 3 ~~S.~~ 4

(A)

(B)

D.S. with repeat
mf

(C)

CAGNEY AND LACEY

PIANO | LEAD PART

Alto Saxes only from beginning

By Bill Conti

Play from 8. bar

Musical notation for the first system, featuring piano lead part for right and left hands. The right hand (R.H.) is marked with a forte (ff) dynamic. The left hand (L.H.) is marked with a forte (ff) dynamic. The notation includes a treble clef and a bass clef, with a 4/4 time signature. The music consists of eighth and sixteenth notes, with some chords and slurs.

Musical notation for the second system, including a 'No RP1 on D8' annotation and a 'Disco Rhythm' instruction. The notation includes a treble clef and a bass clef, with a 4/4 time signature. The music consists of eighth and sixteenth notes, with some chords and slurs. A circled '8' with a slash and 'Bb' is written above the staff, with the text 'No RP1 on D8' next to it. Below the staff, the text '+ Disco Rhythm' and 'PLAY f' is written.

Musical notation for the third system, featuring a 'Bb' annotation and a 'simile' instruction. The notation includes a treble clef and a bass clef, with a 4/4 time signature. The music consists of eighth and sixteenth notes, with some chords and slurs. A circled 'A' with 'Bb' is written above the staff. Below the staff, the text 'simile' is written.

Musical notation for the fourth system, featuring a 'Gm7' annotation and a 'simile' instruction. The notation includes a treble clef and a bass clef, with a 4/4 time signature. The music consists of eighth and sixteenth notes, with some chords and slurs. A circled 'A' with 'Bb' is written above the staff. Below the staff, the text 'simile' and 'Gm7' are written.

PIANO(2)

Chords: Eb, Dm, Eb, Dm, Eb, Dm

Chords: Eb, F11, Eb

Chord: Gm7

Chords: Dm, Eb, Dm, F11, F, F11

Dave,
If you have (B)
'STRINGS'
effect
on
piano
please
use
from
this bar

Chords: Cm7, F, Bbmaj7, Eb, Cm7, Dm7, Gm

Bring Out *ff*

Piano (3)

Chords: Eb, F7, Bb, Eb, Cm7, Eb, D, D7+9

end "STRINGS"

Chords: Bb, Cm7

f

Chords: Dm, Eb, Dm, F11, F, F11

D.S. ^{- out} _{with-} repeat

Ⓢ DON'T PLAY

Stop Rhythm

Alto Saxes Only

no chord

Chord: Bb

fff

PLAY

RH. GUITAR

CAGNEY & LACEY

3 1 S. mf

(A) mf

f

f

f

(B) ff

ff

f

f D.S.

(C) 4 x1 fff

without repeat

BASS Guitar

L'AGNEY & LACEY

3 1 *D.S.*

(A) *mf* Bb Gm7

Eb Dm Eb Dm Eb Dm Eb FII

f Bb Gm7

Eb Dm Eb Dm FII

(B) *f* Cm7 F Bb maj7 Eb Cm7 Dm7

Gm Eb F7 Bb Eb Cm7 Eb D D7

f Bb Gm7 Eb Dm Eb

D.S. without repeat
Dm FII F FII

(C) *fff*

DRUMS

CAGNEY & LACEY

3 1 8 ↑ CR. HI-HAT

Snare (A) ↑ CR. LOW TOM TOM

LOW TOM TOM T. TOM Low T. Tom

2

(B) ↑ CR. 2 3 4 5

6 Low T. Tom ↑ CR. Low T. Tom 2

Low T. Tom 2 3 D.S. with repeat

(C) 4 ↑ CR. ↓ fff